



Setup and Configuration of the

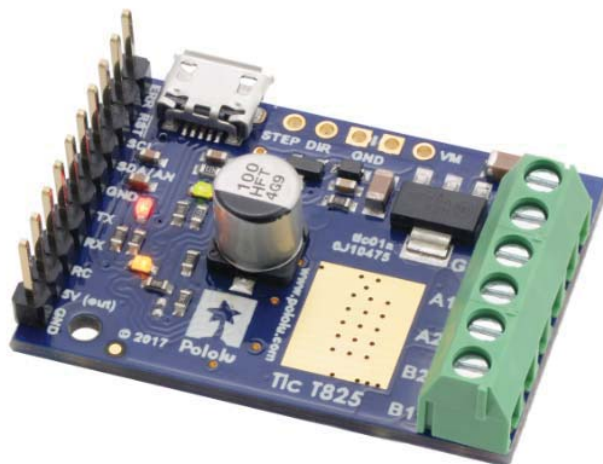
# Tic T825 Controller

(Tic T825 USB Multi-Interface Stepper Controller)

## Compatible Products:

**Tic T825 Controller**  
**S20-SS-MM-C**  
**T20-SS-MM-C**  
**P8-SS-GG-VV-ST**

This note provides information regarding the Tic T825 Stepper Controller and Pololu's free stepper driver software, with the intent to allow custom control and configuration of our stepper actuator families. For the Tic T825 complete datasheet and User Guide visit Pololu's website. <https://www.pololu.com/product/3130>



## Quick Setup:

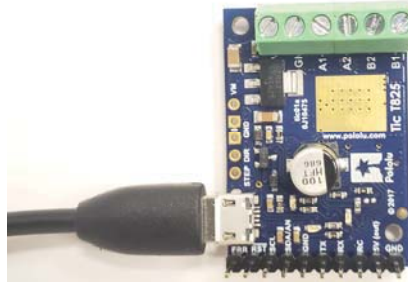
The information in this section will help in connecting your stepper motor and power supply to the Tic.

**WARNING:** Connecting or disconnecting a stepper motor while the Tic's motor power supply (VIN) is powered can DESTROY the motor driver. (Rewiring anything while it is powered can be problematic)

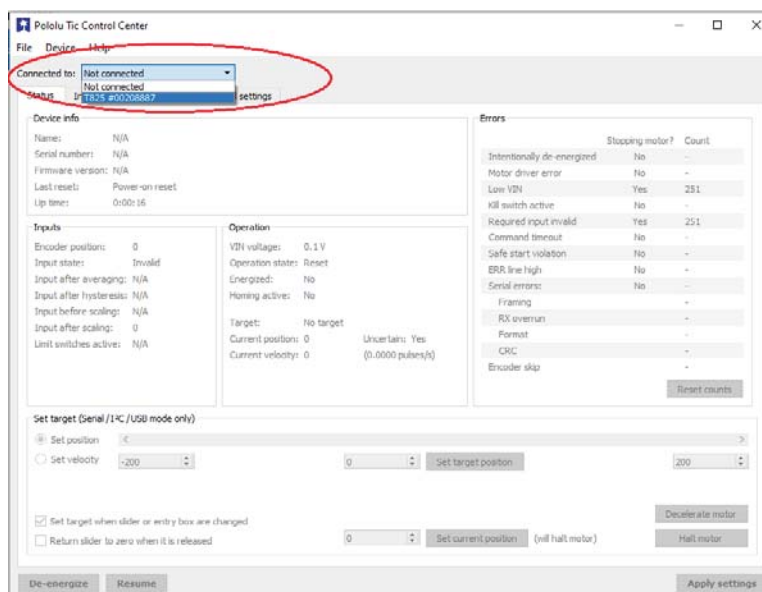
Begin by downloading the Tic Control Center software of the Pololu's website.

<https://www.pololu.com/product/3130/resources>

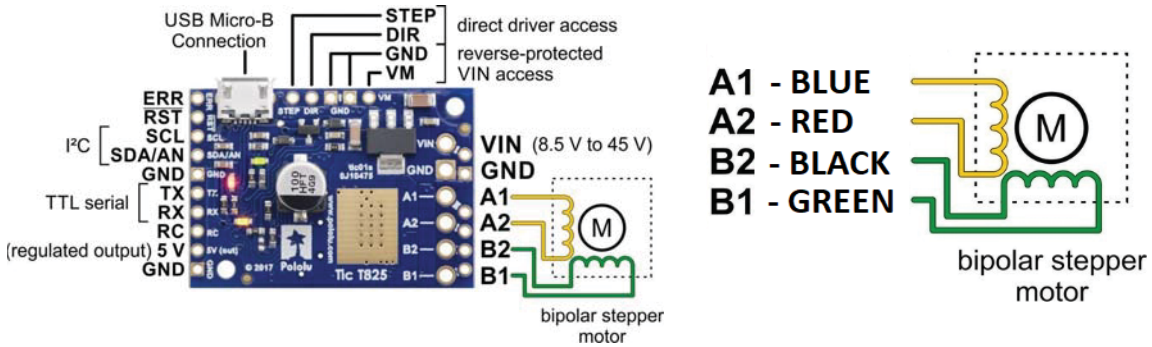
Open and run the Tic Control Center software. It is recommended to run the Tic Control Center software to make sure the software can connect to the Tic over USB. This ensures the Tic is functioning before investing more time into setup.



With the Tic Control Center software open and the USB connected, the Tic should automatically connect. If it does not automatically connect then use the drop down menu labelled "Connected to:" and select the Tic. The Tic should now be connected to the Tic Control Center.



Next is to connect the stepper motor wires to the Tic T825. Using the Pin layout below.



Make sure the stepper motor is connected and the wires are in the correct PIN location.

The power supply can be connected only once the stepper actuator is connected to the Tic board. Connect the power supply as shown in the image below. We recommend a 12V DC 2A Power Supply. <https://www.actuonix.com/DC-Power-Supply-p/dcpowersupply.htm>

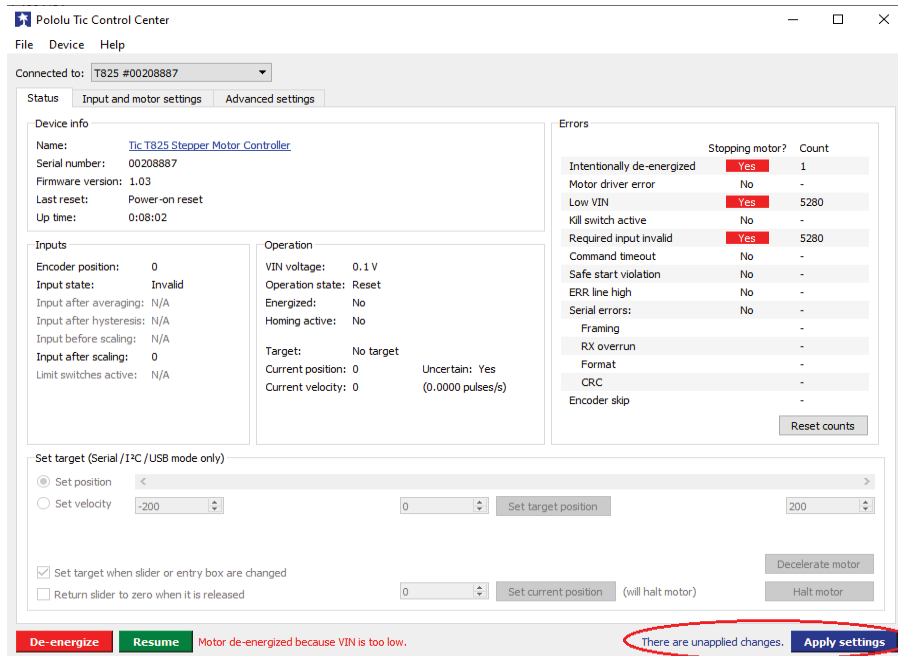
**WARNING:** The product is not certified for any particular high-voltage safety standard. Voltages above 30V can be extremely dangerous and should only be attempted by qualified individuals.



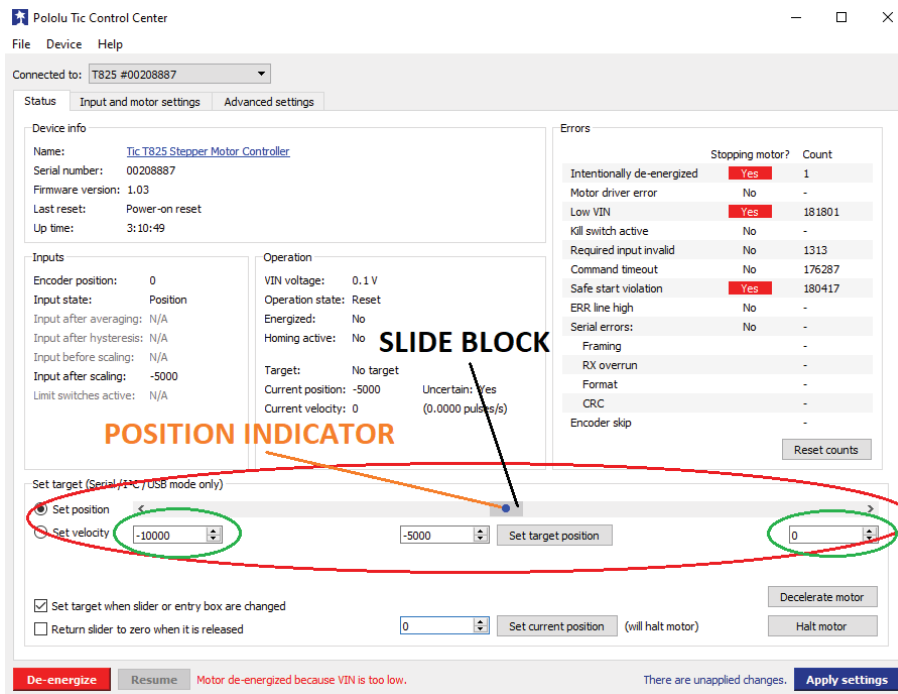
The Tic Control Center starts with default motor settings. These are found in the “Motor” block of “Input and motor settings” tab. These default settings must be changed for the Actuonix’s Linear Stepper Actuator to run correctly.

Next is to download the configuration file “S20-FULL-QuickStart” from Actuonix’s website.

In the Pololu Tic Software, at the top left select “File” and then select “Open settings file...” the configuration file to the Tic Control Center software. Make sure to “Apply Settings” once the config file is loaded. See image below.

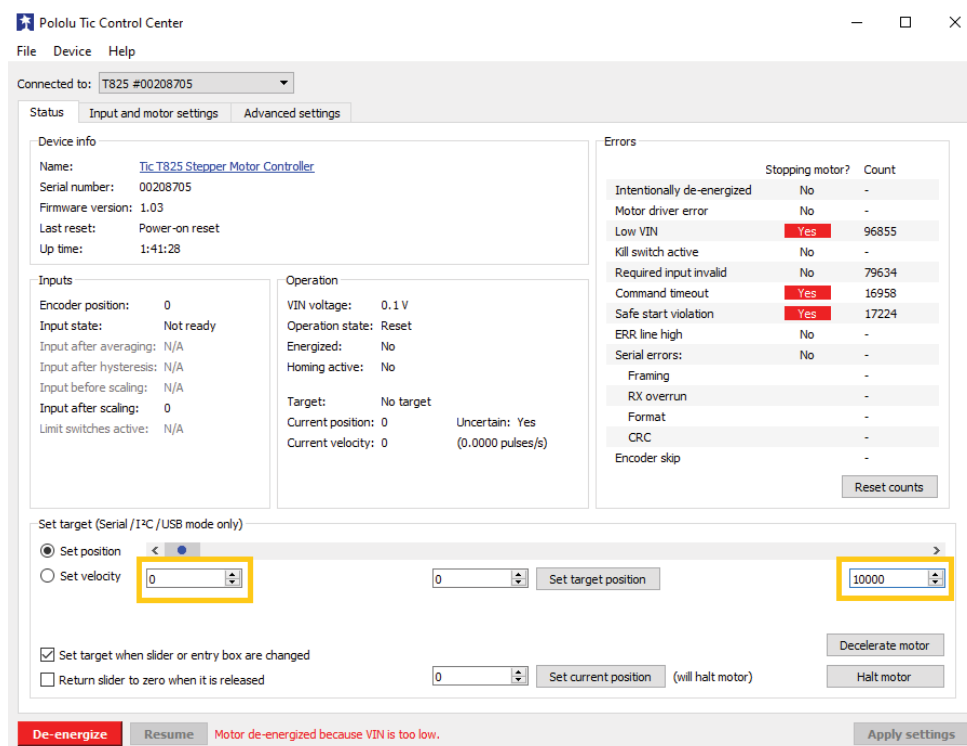


Next is to set the correct number of steps for the actuator to complete a full stroke. Each stroke length has a different number of steps required to travel its entire stroke. The slide on “Status” tab defaults from -200 steps to 200 steps. These values must be changed for the step size and given stroke length of actuator being used.



The slide bar represents the actuators stroke, where the slide block is the target position and the position indicator marks the current position. However, as there is no feedback on the stepper actuator if steps are missed the Tic Control Center software does not recognize this and the position indicator will show it has successfully hit the target position.

For the “S20-FULL-QuickStart” file the steps size is **FULL** and the total number of steps for strokes lengths of 15mm, 30mm, 50mm, and 100mm are 1500 steps, 3000 steps, 5000 steps, and 10,000 steps respectively. The number of total steps required to complete one stroke is the stroke length divided by the step size. In Table 1, the total steps required for a specific stroke length and step mode is shown.



With the correct number of steps inputted you can now move the slide block, however, before it will move the actuator you must first press “Resume” to energize (power) the motor. Actuonix’s linear stepper actuator models do not contain position feedback; this is why it is required to **home** the actuator before use. To **home** the actuator it must be overstepped into either the fully extended or fully retracted position.

It is best practice to always “De-energize” the actuator after each use or during long periods of idle time.

**Note: the motor movement may be opposite direction as desired, this can be changed by checking the “Invert motor direction” box in the “Input and motor settings” tab.**

## Stroke Length, Speed and Acceleration Customization:

This section will guide you in customizing the control and parameters of our S20 and P8-ST Actuator line using the Tic T825 control board.

The Tic T825 has a wide range of control inputs and customizable parameters. The main customizable parameters that relate directly to actuator performance include: **starting speed, max speed, acceleration, deceleration, step size, max current and number of steps**. Table 1 below shows the range of values that are acceptable inputs for the S20 and Tic T825.

| Step Mode->:                         |                       | Full (step size = 0.01mm) | 1/2 (0.005mm) | 1/4 (0.0025mm) | 1/8 (0.00125mm) | 1/16 (0.000625mm) | 1/32 (0.0003125mm) |
|--------------------------------------|-----------------------|---------------------------|---------------|----------------|-----------------|-------------------|--------------------|
| Stroke Length(mm)                    | Revolutions           | Steps                     | Steps         | Steps          | Steps           | Steps             | Steps              |
| 15                                   | 7.5                   | 1500                      | 3000          | 6000           | 12000           | 24000             | 48000              |
| 30                                   | 15                    | 3000                      | 6000          | 12000          | 24000           | 48000             | 96000              |
| 50                                   | 25                    | 5000                      | 10000         | 20000          | 40000           | 80000             | 160000             |
| 100                                  | 50                    | 10000                     | 20000         | 40000          | 80000           | 160000            | 320000             |
| 150                                  | 75                    | 15000                     | 30000         | 60000          | 120000          | 240000            | 480000             |
| Speed (mm/s), (steps/s)              | speed (mm/s)          | steps/s                   | steps/s       | steps/s        | steps/s         | steps/s           | steps/s            |
|                                      | 1                     | 100                       | 200           | 400            | 800             | 1600              | 3200               |
|                                      | 5                     | 500                       | 1000          | 2000           | 4000            | 8000              | 16000              |
|                                      | 10                    | 1000                      | 2000          | 4000           | 8000            | 16000             | 32000              |
|                                      | 15                    | 1500                      | 3000          | 6000           | 12000           | 24000             | 48000              |
|                                      | 30                    | 3000                      | 6000          | 12000          | 24000           | 48000             | 96000              |
|                                      | 40                    | 4000                      | 8000          | 16000          | 32000           | 64000             | 128000             |
|                                      | 50                    | 5000                      | 10000         | 20000          | 40000           | 80000             | 160000             |
|                                      | 60                    | 6000                      | 12000         | 24000          | 48000           | 96000             | 192000             |
| 70                                   | 7000                  | 14000                     | 28000         | 56000          | 112000          | 224000            |                    |
| 80                                   | 8000                  | 16000                     | 32000         | 64000          | 128000          | 256000            |                    |
| Beyond Driver Limits (50000 maximum) |                       |                           |               |                |                 |                   |                    |
| Maximum Reliable Acceleration        | pulses/s <sup>2</sup> | 10000                     | 20000         | 40000          | 80000           | 160000            | 320000             |

**Table 1: S20-38MM Actuator and Tic T825 Parameters**



| <b>49:1</b>                          | Step Mode->     | Full<br>≅0.006mm | 1/2<br>≅0.003mm | 1/4<br>≅0.0015mm | 1/8<br>≅0.00075mm | 1/16<br>≅0.000375mm | 1/32<br>≅0.0001875mm |
|--------------------------------------|-----------------|------------------|-----------------|------------------|-------------------|---------------------|----------------------|
| Stroke Length(mm)                    | Revolutions     | steps            | steps           | steps            | steps             | steps               | steps                |
| 10                                   | 1.67            | 1666.7           | 3333.3          | 6666.7           | 13333.3           | 26666.7             | 53333.3              |
| 25                                   | 4.17            | 4166.7           | 8333.3          | 16666.7          | 33333.3           | 66666.7             | 133333.3             |
| 50                                   | 8.33            | 8333.3           | 16666.7         | 33333.3          | 66666.7           | 133333.3            | 266666.7             |
| 75                                   | 12.50           | 12500.0          | 25000.0         | 50000.0          | 100000.0          | 200000.0            | 400000.0             |
| 100                                  | 16.67           | 16666.7          | 33333.3         | 66666.7          | 133333.3          | 266666.7            | 533333.3             |
| Speed<br>(mm/s),<br>(steps/s)        | speed<br>(mm/s) | steps/s          | steps/s         | steps/s          | steps/s           | steps/s             | steps/s              |
|                                      | 1               | 167              | 333             | 667              | 1333              | 2667                | 5333                 |
|                                      | 5               | 833              | 1667            | 3333             | 6667              | 13333               | 26667                |
|                                      | 10              | 1667             | 3333            | 6667             | 13333             | 26667               | 53333                |
|                                      | 15              | 2500             | 5000            | 10000            | 20000             | 40000               | 80000                |
|                                      | 30              | 5000             | 10000           | 20000            | 40000             | 80000               | 160000               |
|                                      | 40              | 6667             | 13333           | 26667            | 53333             | 106667              | 213333               |
|                                      | 50              | 8333             | 16667           | 33333            | 66667             | 133333              | 266667               |
|                                      | 60              | 10000            | 20000           | 40000            | 80000             | 160000              | 320000               |
|                                      | 70              | 11667            | 23333           | 46667            | 93333             | 186667              | 373333               |
| 80                                   | 13333           | 26667            | 53333           | 106667           | 213333            | 426667              |                      |
| Beyond Driver Limits (50000 maximum) |                 |                  |                 |                  |                   |                     |                      |
| Maximum<br>Reliable<br>Acceleration  | steps/s^2       | 10000            | 20000           | 40000            | 80000             | 160000              | 320000               |

**Table 2: 49:1 Gear Ratio P8-ST and Tic T825 Parameters**

| <b>165:1</b>                         | Step Mode->          | Full<br>≈0.0018mm | 1/2<br>≈0.00091mm | 1/4<br>≈0.00045mm | 1/8<br>≈0.00023mm | 1/16<br>≈0.00011mm | 1/32<br>≈0.000057mm |
|--------------------------------------|----------------------|-------------------|-------------------|-------------------|-------------------|--------------------|---------------------|
| Stroke Length(mm)                    | Revolutions          | steps             | steps             | steps             | steps             | steps              | steps               |
| 10                                   | 1.67                 | 5500              | 11000             | 22000             | 44000             | 88000              | 176000              |
| 25                                   | 4.17                 | 13750             | 27500             | 55000             | 110000            | 220000             | 440000              |
| 50                                   | 8.33                 | 27500             | 55000             | 110000            | 220000            | 440000             | 880000              |
| 75                                   | 12.50                | 41250             | 82500             | 165000            | 330000            | 660000             | 1320000             |
| 100                                  | 16.67                | 55000             | 110000            | 220000            | 440000            | 880000             | 1760000             |
| Speed<br>(mm/s),<br>(steps/s)        | speed<br>(mm/s)      | steps/            | steps/s           | steps/s           | steps/s           | steps/s            | steps/s             |
|                                      | 1                    | 550               | 1100              | 2200              | 4400              | 8800               | 17600               |
|                                      | 5                    | 2750              | 5500              | 11000             | 22000             | 44000              | 88000               |
|                                      | 10                   | 5500              | 11000             | 22000             | 44000             | 88000              | 176000              |
|                                      | 15                   | 8250              | 16500             | 33000             | 66000             | 132000             | 264000              |
|                                      | 30                   | 16500             | 33000             | 66000             | 132000            | 264000             | 528000              |
|                                      | 40                   | 22000             | 44000             | 88000             | 176000            | 352000             | 704000              |
|                                      | 50                   | 27500             | 55000             | 110000            | 220000            | 440000             | 880000              |
|                                      | 60                   | 33000             | 66000             | 132000            | 264000            | 528000             | 1056000             |
|                                      | 70                   | 38500             | 77000             | 154000            | 308000            | 616000             | 1232000             |
| 80                                   | 44000                | 88000             | 176000            | 352000            | 704000            | 1408000            |                     |
| Beyond Driver Limits (50000 maximum) |                      |                   |                   |                   |                   |                    |                     |
| Maximum<br>Reliable<br>Acceleration  | steps/s <sup>2</sup> | 10000             | 20000             | 40000             | 80000             | 160000             | 320000              |

**Table 3: 165:1 Gear Ratio P8-ST and Tic T825 Parameters**



## Parameter Setup Example

Below is an example of how one would go about modify the parameters in the Tic Control Center using the table provided. Complete the following **three** steps to successfully customize the Tic Control Center parameters.

### Step Mode and Stroke Length

- 1) Choose a stroke length and Step Mode, enter the -value in the box beside "Set Velocity"  
Ex. Stroke length 100mm and Step Mode 1/8 gives a value of 80000

Pololu Tic Control Center

File Device Help

Connected to: T825 #00289406

Status Input and motor settings Advanced settings

Device info

Name: Tic T825 Stepper Motor Controller

Serial number: 00289406

Firmware version: 1.06

Last reset: Power-on reset

Up time: 0:31:24

Inputs

Encoder position: 0

Input state: Not ready

Input after averaging: N/A

Input after hysteresis: N/A

Input before scaling: N/A

Input after scaling: 0

Limit switches active: N/A

Operation

VIN voltage: 0.1 V

Operation state: Reset

Energized: No

Homing active: No

Target: No target

Current position: 0

Current velocity: 0

Uncertain: Yes (0.0000 pulses/s)

Errors

|                            | Stopping motor? | Count |
|----------------------------|-----------------|-------|
| Intentionally de-energized | No              | -     |
| Motor driver error         | No              | -     |
| Low VIN                    | Yes             | 30000 |
| Kill switch active         | No              | -     |
| Required input invalid     | No              | 358   |
| Command timeout            | Yes             | 28721 |
| Safe start violation       | Yes             | 29644 |
| ERR line high              | No              | -     |
| Serial errors:             | No              | -     |
| Framing                    | -               | -     |
| RX overrun                 | -               | -     |
| Format                     | -               | -     |
| CRC                        | -               | -     |
| Encoder skip               | -               | -     |

Reset counts

Set target (Serial/I2C/USB mode only)

Set position < 0 >

Set velocity -80000 0 Set target position 0

Set target when slider or entry box are changed

Return slider to zero when it is released 0 Set current position (will halt motor)

Decelerate motor

Halt motor

De-energize Resume Motor de-energized because VIN is too low. Apply settings

### Speed

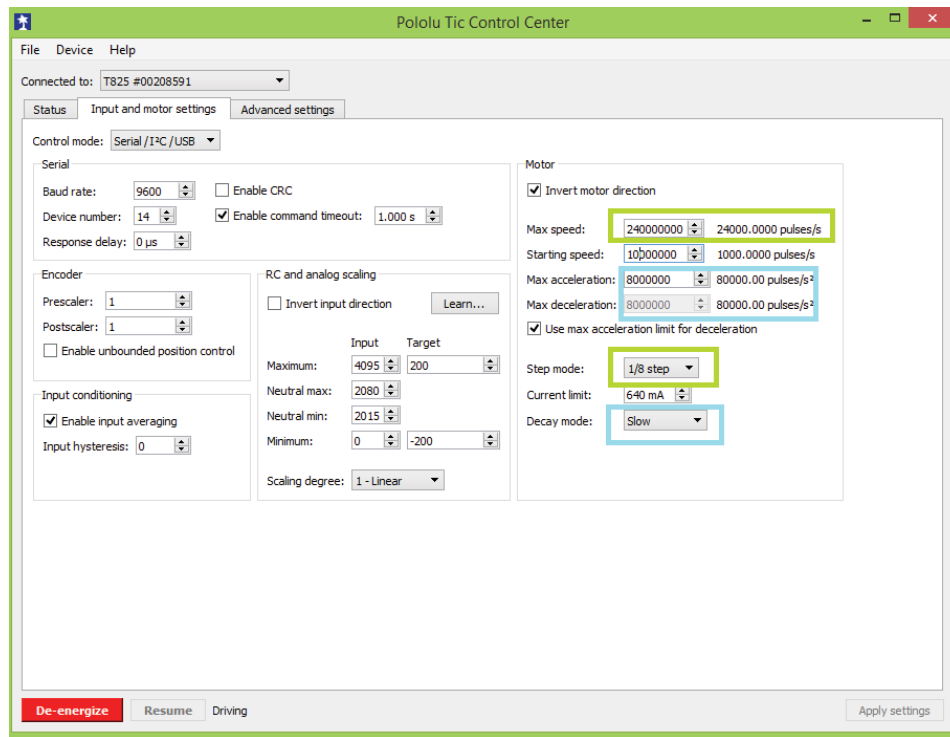
- 2) Choose a speed in the speed column, then run along to the same Step mode column as 1),  
Enter this value in box beside Max speed: Ex. 30mm/s gives 24000 pulses/s

**Note: you have to add zeros until the number to the right of the box is the correct value**

### Acceleration

- 3) Follow the max acceleration row over to the Step mode column, Enter this Max Acceleration value,  
Enter your selected Step Mode. Enter slow for Decay mode:(this stops an annoying whining noise)

**Note: Starting speed and max acceleration will need to be adjusted if measured speed is too far off from expected speed.**

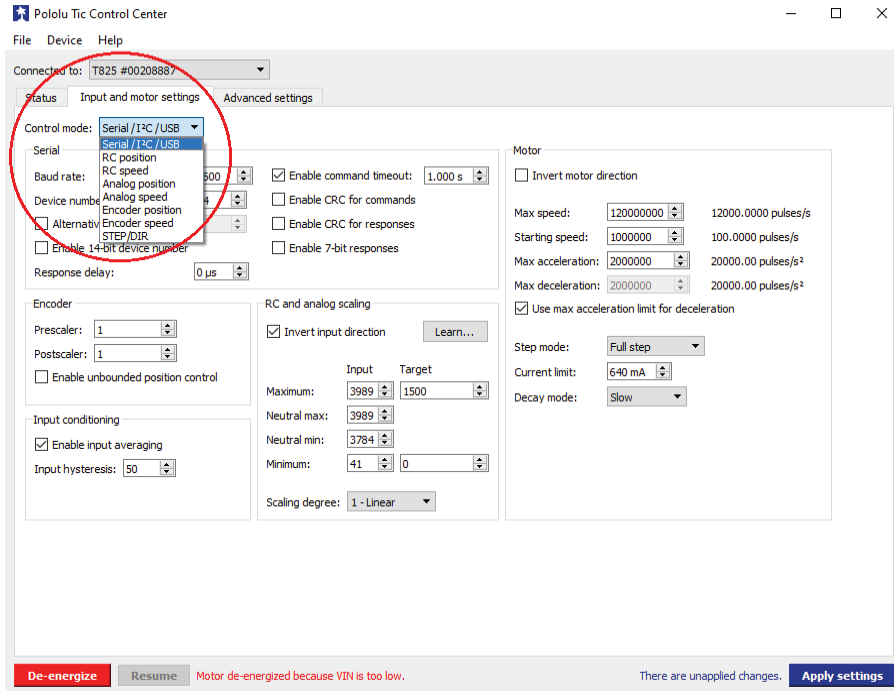


Once the parameters are set it is best to test the travel of the unit using the SLIDE BAR. Only once it is determined to be a successful set of parameters for your application should the control mode be modified.

## Control Mode

For details on control modes and setup see Pololu's Tic Stepper Motor Controller User Guide. <https://www.pololu.com/docs/0J71>.

To modify the control mode go to the "Input and motor settings" tab. At the top left of the tab there is a drop down menu labelled "Control mode". Set the dropdown to the desired control mode.



Included in the Quick Start Configuration files are four RC position configuration files (S20-15mm-RC, S20-30mm-RC, S20-50mm-RC, and S20-100mm-RC). The files use the control mode “RC position” to drive the stepper actuator with radio control. The scaling has been predetermined through use of the “RC and analog scaling” block and the “Learn” wizard built into the Tic Control Center software. For explanation on how to use the wizard visit Pololu’s website at <https://www.pololu.com/docs/0J71/4.7>.

*Technical assistance and design support services — Disclaimer of Warranties; Release of Claims*

*Actuonix offers technical assistance and design support services as a convenience to Actuonix customers. Actuonix personnel strive to provide useful information regarding Actuonix products. Actuonix does not guarantee that any information or recommendation provided is accurate, complete, or correct, and Actuonix shall have no responsibility or liability whatsoever in connection with any information or recommendation provided, or the customer's reliance on such information or recommendation. The customer is solely responsible for analyzing and determining the appropriateness of any information or recommendation provided by Actuonix personnel, and any reliance on such information or recommendation is at the customer's sole risk and discretion. Accordingly, the customer shall release and hold Actuonix harmless from and against any and all loss, liability, and damage incurred by the customer or any third party as a result of any information or recommendation provided to the customer or the customer's reliance on such information or recommendation.*

**All information provided on this datasheet is subject to change. Purchase or use of Actuonix actuators is subject to acceptance of our terms and conditions as posted here: <http://www.actuonix.com/terms.asp>**

Rev A - August 2021



Actuonix Motion Devices Inc. 1 (206) 347-9684 Phone  
 Unit 201-1753 Sean Heights 1 (888) 225-9198 Toll Free  
 Saanichton, BC Canada 1 (206) 347-9684 Fax  
 V8M 0B3

sales@actuonix.com  
 www.actuonix.com